

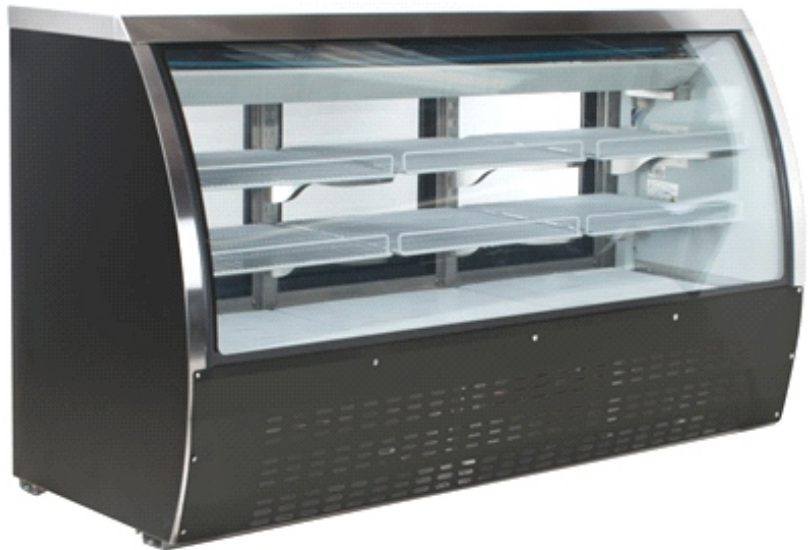


- **Interior:** Aluminum liner with stainless floor.
Exterior: Stainless Steel. Black coated steel is available.
- **Attractive curved glass front and sliding rear doors for easy access.**
- **Interior:** Rounder corner design makes for easy cleaning.
- **Shelves:** Adjustable heavy-duty PVC coated.
- **Refrigeration system** keeps meat and deli products at safe temperatures between 32 F and 43 F
- **Electronic control system** makes it easy to adjust temperature set point and defrost frequency.
- **Removable installation board** makes it easy to access condenser coil for cleaning and service.
- **Pre-installed heavy duty casters with brakes.**
- **LED interior lighting.**
- **These units use HYDRO-CARBON R290 refrigerant,** which is environmentally friendly and more efficient than R134a/R404a refrigerant.

Deli Cases EDC Series



EDC-48-HC



EDC-78-HC

MODEL	DOORS	SHELVES	DIMENSIONS - WxDxH inches	CAPACITY cu.ft.	HP	AMPS	VOLTAGE	PLUG TYPE
EDC-48-HC	2	6	48 x 32 1/2 x 42 7/8	18	1/4+	3.1	115/60/1	NEMA 5-15P
EDC-78-HC	3	9	82 x 32 1/2 x 42 7/8	32	3/4	7.1	115/60/1	NEMA 5-15P



Specifications subject to change without notice.