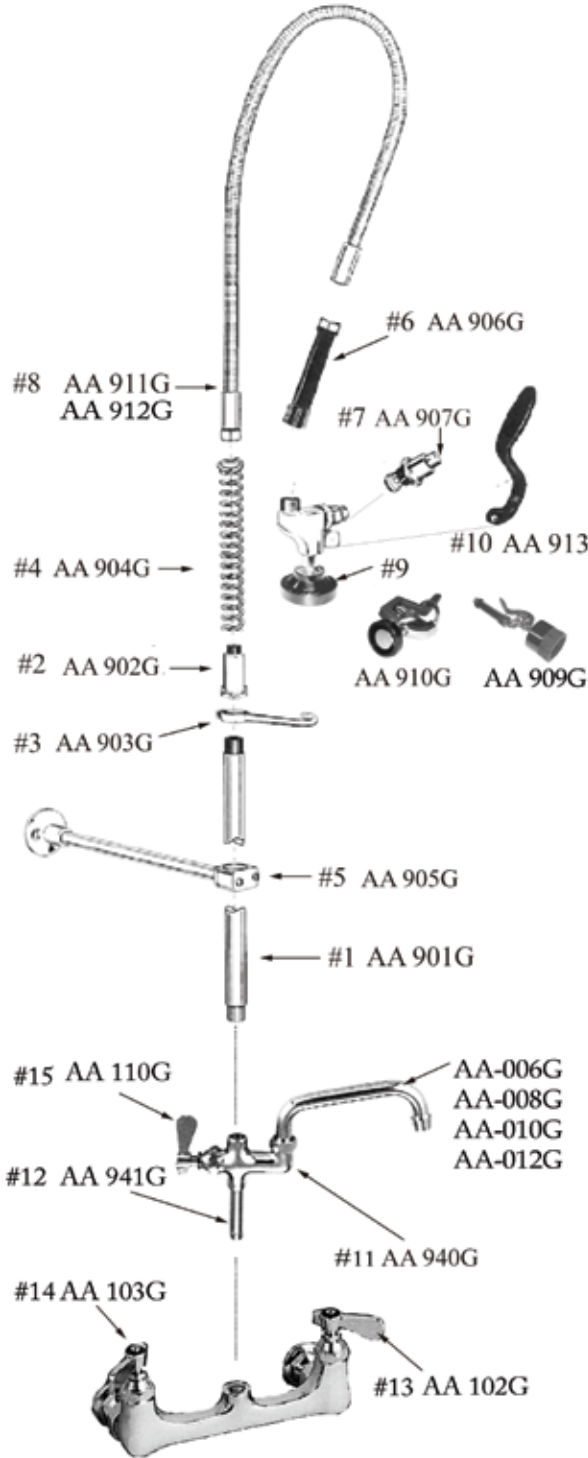


Pre-Rinse Unit Parts & Spouts



Order No	Description	Weight lbs/case	Pack/case
#1 AA-901G	24" Riser.	31	25
#2 AA-902G	Spring Retainer.	51	100
#3 AA-903G	Rise Hook.	19	100
#4 AA-904G	Heat Treated Spring.	38	25
#5 AA-905G	12" Brass Wall Bracket.	21	20
#6 AA-906G	Hose Grid.	9	20
#7 AA-907G	Spray Valve Bonnet Assembly.	23	100
#8 AA-911G	44" Hose Assembly with Grid.	31	20
AA-912G	60" Hose Assembly with Grid.	42	20
#9 AA-910G	Pre-Rinse Spray Valve Assembly.	26	20
AA-909G	Pre-Rinse Spray Valve Assembly With Brush.	38	20
#10 AA-913	Plastic handle for spray valve.	10	100
#11 AA-940G	Add On Faucet. Base Only.	30	20
#12 AA-941G	Rise For Add-On Faucet.	8	50
#13 AA-102G	Stem Check Unit w/B-Handle. Cold	53	100
#14 AA-103G	Stem Check Unit w/B-Handle. Hot	53	100
#15 AA-110G	Stem Check Unit w/B-Handle.	40	100

Optional Add-On Faucet



Order No	Description	Weight lbs/case	Pack/case
AA-940G	Add On Faucet Body	30	20
AA-941G	Rise For Add-On Faucet.	8	50
AA-942G	Add On Faucet w/8" Spout.	51	24
AA-943G	Add On Faucet w/10" Spout.	51	24
AA-944G	Add On Faucet w/12" Spout.	51	24
AA-945G	Add On Faucet w/14" Spout.	56	24